

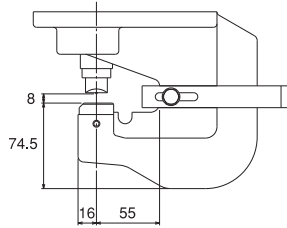
DIAMOND ELECTRO-H

Powerful punching action produces a burr-free, round
Strong enough for steel, these punchers run off single-phase electricity, have do

EP-19V

The most popular of our punchers
Comes with 11mmφ punch & die

Max. hole sizes (mm)



Max. material thickness (mm)

Fe, Al 6 SUS 5

16.1kg
133×195×484mm
AC100V/115V/230V
1050W



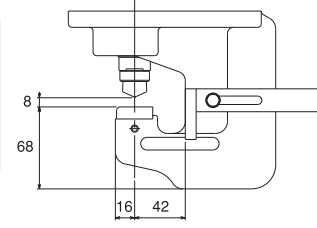
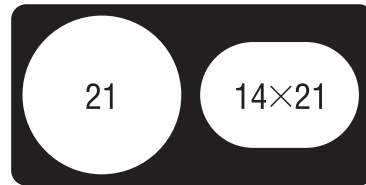
Round	6	6.5	8	8.5	9	10
Fe, Al	6					
SUS	3	4	5			
Round	11	12	13	14	15	16
Fe, Al	6					
SUS	5				4	
Round	17	18	18.5	19	20	
Fe, Al	6					
SUS	4					

Elliptical	6.5×10	6×13	8×13	8.5×17	9×13.5	9×18
Fe, Al	6					
Elliptical	10×15	10×20	11×16.5	12×18	14×19.5	14×21
Fe, Al	6					

EP-20S

More powerful than the EP-19V for thicker bars
Features a throat scale for ease of set-up
Comes with 11mmφ punch & die

Max. hole sizes (mm)



Max. material thickness (mm)

Fe, Al 8 SUS 6

15.0kg
138×217×554mm
AC100V/115V/230V
2500W



Round	6	6.5	8	8.5	9	10
Fe, Al	4.5	6			8	
SUS	3	4	5			
Round	11	12	13	14	15	16
Fe, Al	8					
SUS	6					
Round	17	18	18.5	19	20	
Fe, Al	8					
SUS	6					

Elliptical	6.5×10	6×13	8×13	8.5×17	9×13.5	9×18
Fe, Al	6					8
Elliptical	10×15	10×20	11×16.5	12×18	14×19.5	14×21
Fe, Al	8					

HYDRAULIC PUNCHERS

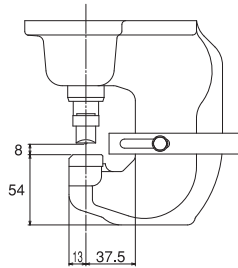
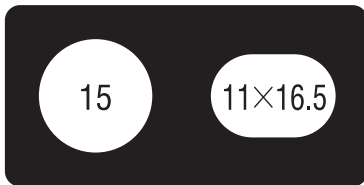
Round or elliptical hole far faster than any other method.
Double-insulation and are equipped with side handle, stand and carrying case.

EP-1475V

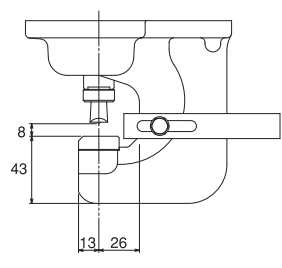
EP-1406V

Our two smallest punchers still pack a mighty wallop. The EP-1475V features a deeper throat for lip channel bars while the EP-1406V is the lightest of all. Both models cover the same hole ranges and come with 11mm ϕ punch & die.

Max. hole sizes (mm)



Max. hole sizes (mm)



Max. material thickness (mm)

Fe, Al 6 SUS 5

Max. material thickness (mm)

Fe, Al 6 SUS 5

11.8kg
124×175×421mm
AC100V/115V/230V
1020W



9.6kg
124×175×381mm
AC100V/115V/230V
1020W



Round	3.4	4.2	5	5.5	6	6.5	8	8.5	9	10	11	12	13	14	15
Fe, Al	2.3		3.2		4.5	6									
SUS						3	4	5					4		

Elliptical	4.5×9	5.5×11	6.5×10	6.5×13	8.5×13	9×13.5	10×15	11×16.5
Fe, Al	4.5							
	6							

At a glance:



20

Max. round hole size (mm)

14×21

Max. elliptical hole size (mm)

Fe, Al 6

SUS 5

Max. material thickness (mm)

Hole and material thickness are shown life-size.



Double insulation

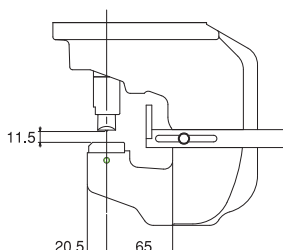
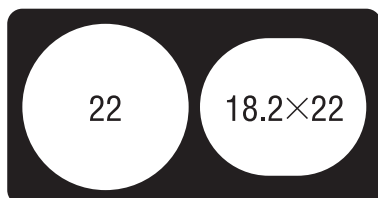
HYDRAULIC PUNCHERS

for round or elliptical hole far faster than any other method.
 Available in round or elliptical hole and are equipped with side handle, stand and carrying case.

EP-2110V

Excellent for H-beams Comes with 14mm ϕ punch & die

Max. hole sizes (mm)



Max. material thickness (mm)

Fe, Al 10

SUS 5

Round	10	11	12	13	14	15	16
Fe, Al	6	9			10		
SUS	5			6			
Round	17	18	19	20	21	22	
Fe, Al	10						
SUS	6						

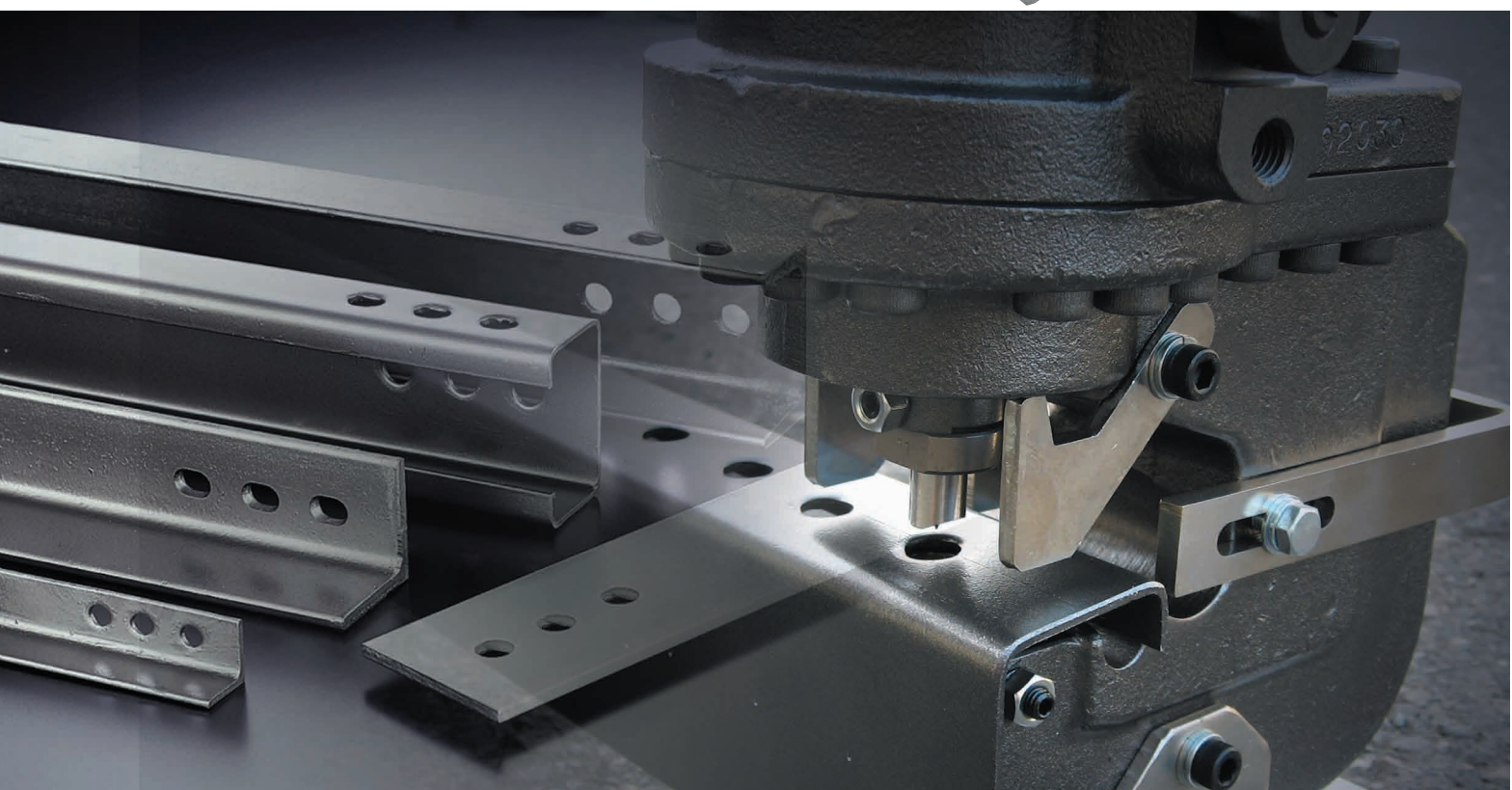
Elliptical	9x13.5	9x16	10x15	10x18	11x16.5	12x20
Fe, Al	6		9			
Elliptical	13x19	14x19.5	14x22	16.5x20	18.2x22	
Fe, Al	9	10				

23.8kg

138x217x554mm

AC100V/115V/230V

2500W



EP-2110V

Elliptical hole			CUSTOM-MADE		
Size	Punch AH	Die AH	Size	Punch AH	Die AH
			8.0×15	6P11225L	6P12025B
9×13.5	6P1124L	6P1204B			
9×16	6P1125L	6P1205B			
10×15	6P1126L	6P1206B			
10×18	6P1127L	6P1207B			
			10×20	6P11272L	6P12072B
			10×25	6P11271L	6P12071B
11×16.5	6P1128L	6P1208B			
			11×18	6P11280L	6P12081B
			11.5×25	6P1129L	6P12082B
12×20	6P1134L	6P1213B			
13×19	6P1130L	6P1209B			
			14×18	6P11311L	6P1216B
14×19.5	6P1131L	6P1210B			
			14×21	6P11318L	6P12161B
14×22	6P11310L	6P1214B			
			14×22.5	6P11312L	6P1217B
			16×22	6P11325L	6P12115B
16.5×20	6P1132L	6P1211B			
18.2×22	6P1133L	6P1212B			
			North/South Elliptical		
			19.5×14	6P1131LY	6P1210BY

Round hole		
Size	Punch AH	Die AH
10.0	6P1104L	6P1164B
11.0	6P1105L	6P1165B
12.0	6P1106L	6P1166B
13.0	6P1107L	6P1167B
14.0	6P1108L	6P1168B
15.0	6P1109L	6P1169B
16.0	6P1110L	6P1170B
17.0	6P1111L	6P1171B
18.0	6P1112L	6P1172B
19.0	6P1114L	6P1174B
20.0	6P1117L	6P1177B
21.0	6P1115L	6P1175B
22.0	6P1116L	6P1176B

PUNCH/DIE SETS OF OTHER SIZES ARE AVAILABLE ON REQUEST. PLEASE CONSULT YOUR DEALER.

EP-19V/EP-20S

Elliptical hole						
Size	Punch	B Die	A Die	CB Die	S Punch	TB Die
6.5×10	4P1120	3P1200	3P1180			
6.5×13	4P1121	3P1201	3P1181			
8.5×13	4P1122	3P1202	3P1182	3P1202C		
8.5×17	3P1123	3P1203	3P1183			
9×13.5	4P1124	3P1204	3P1184	3P1204C	3P1124S	3P1204TB
9×18	3P1125	3P1205	3P1185		3P1125S	3P1205TB
10×15	4P1126	3P1206	3P1186	3P1206C	3P1126S	3P1206TB
10×20	3P1127	3P1207	3P1187		3P1127S	3P1207TB
11×16.5	4P1128	3P1208	3P1188	3P1208C	3P1128S	3P1208TB
12×18	3P1129	3P1209	3P1189	3P1209C	3P1129S	3P1209TB
14×19.5	3P11301	3P12101	3P11901		3P11301S	3P12101TB
14×21	3P1131	3P1211	3P1191	3P1211C	3P1131S	3P1211TB

S punch and TB die are only for the EP-20S.

- A Dies are used for thin workpieces (2.0~3.2mm), B Dies are used for thick workpieces (3.2~6.0mm).
- SA Dies are used for thin stainless workpieces (1.0~2.3mm), SB Dies are used for thick stainless workpieces (3.0~5.0mm).
- CB dies are for the B sides of channel bars.

PUNCH/DIE SETS OF OTHER SIZES ARE AVAILABLE ON REQUEST. PLEASE CONSULT YOUR DEALER.

Round hole								
Size	Punch	B Die	A Die	CB Die	S Punch	SB Die	SA Die	TB Die
3.4	4P1096	—	3P1156	—	—	—	—	—
4.2	4P1097	—	3P1157	—	—	—	—	—
5.0	4P1098	—	3P1158	—	—	—	—	—
5.5	4P1099	—	3P1159	—	—	—	—	—
6.0	4P1100	3P1160	3P1140	—	—	—	—	—
6.5	4P1101	3P1161	3P1141	3P1161C	3P1101S	3P1240	3P1220	—
8.0	4P1102	3P1162	3P1142	3P1162C	3P1102S	3P1241	3P1221	—
8.5	4P1103	3P1163	3P1143	3P1163C	3P1103S	3P1242	3P1222	—
9.0	4P11030	3P11630	3P11430	—	—	3P12425	3P12420	3P11630TB
10.0	4P1104	3P1164	3P1144	—	3P1104S	3P1243	3P1223	3P1164TB
11.0	4P1105	3P1165	3P1145	3P1165C	3P1105S	3P1244	3P1224	3P1165TB
12.0	4P1106	3P1166	3P1146	3P1166C	3P1106S	3P1245	3P1225	3P1166TB
13.0	4P1107	3P1167	3P1147	3P1167C	3P1107S	3P1246	3P1226	3P1167TB
14.0	4P1108	3P1168	3P1148	3P1168C	3P1108S	3P1247	3P1227	3P1168TB
15.0	4P1109	3P1169	3P1149	3P1169C	3P1109S	3P1248	3P1228	3P1169TB
16.0	3P1110	3P1170	3P1150	3P1170C	3P1110S	3P1249	3P1229	3P1170TB
17.0	3P1111	3P1171	3P1151	—	3P1111S	3P1250	3P1230	3P1171TB
18.0	3P1112	3P1172	3P1152	3P1172C	3P1112S	3P1251	3P1231	3P1172TB
18.5	3P1113	3P1173	3P1153	3P1173C	3P1113S	3P1252	—	3P1173TB
19.0	3P1114	3P1174	3P1154	3P1174C	3P1114S	3P1253	—	3P1174TB
20.0	3P1115	3P1175	3P1155	3P1175C	3P1115S	3P1254	—	3P1175TB3

EPC-1518V/EP-1406V/EP-1475V

Elliptical hole				
Size	Punch	B Die	A Die	CB Die
4.5×9	4P1118	—	4P1178	
5.5×11	4P1119	—	4P1179	
6.5×10	4P1120	4P1200	4P1180	
6.5×13	4P1121	4P1201	4P1181	4P1201C
8.5×13	4P1122	4P1202	4P1182	
9×13.5	4P1124	4P1204	4P1184	4P1204C
10×15	4P1126	4P1206	4P1186	
11×16.5	4P1128	4P1208	4P1188	4P1208C

- A Dies are used for thin workpieces (1.6~3.2mm), and B Dies are used for thick workpieces (3.2~6.0mm).
- SA Dies are used for thin stainless workpieces (1.0~2.3mm), and SB Dies are used for thick stainless workpieces (3.0~5.0mm).
- CB dies are for the B sides of channel bars.

PUNCH/DIE SETS OF OTHER SIZES ARE AVAILABLE ON REQUEST. PLEASE CONSULT YOUR DEALER.

Round hole						
Size	Punch	B Die	A Die	CB Die	SB Die	SA Die
3.4	4P1096	—	4P1156	—	—	—
4.2	4P1097	—	4P1157	—	—	—
5.0	4P1098	—	4P1158	—	—	—
5.5	4P1099	4P1159B	4P1159A	—	—	—
6.0	4P1100	4P1160	4P1140	—	—	—
6.5	4P1101	4P1161	4P1141	—	4P1240	4P1220
8.0	4P1102	4P1162	4P1142	—	4P1241	4P1221
8.5	4P1103	4P1163	4P1143	4P1163C	4P1242	4P1222
9.0	4P11030	4P11635	4P11435	4P11635C	—	—
10.0	4P1104	4P1164	4P1144	—	4P1243	4P1223
11.0	4P1105	4P1165	4P1145	4P1165C	4P1244	4P1224
12.0	4P1106	4P1166	4P1146	4P1166C	4P1245	4P1225
13.0	4P1107	4P1167	4P1147	—	4P1246	4P1226
14.0	4P1108	4P1168	4P1148	4P1168C	4P1247	4P1227
15.0	4P1109	4P1170	4P1152	4P1169C	4P1249	4P1228

DIAMOND
CONSTRUCTION EQUIPMENT
ELECTRICAL TOOLS

Your DIAMOND dealer is